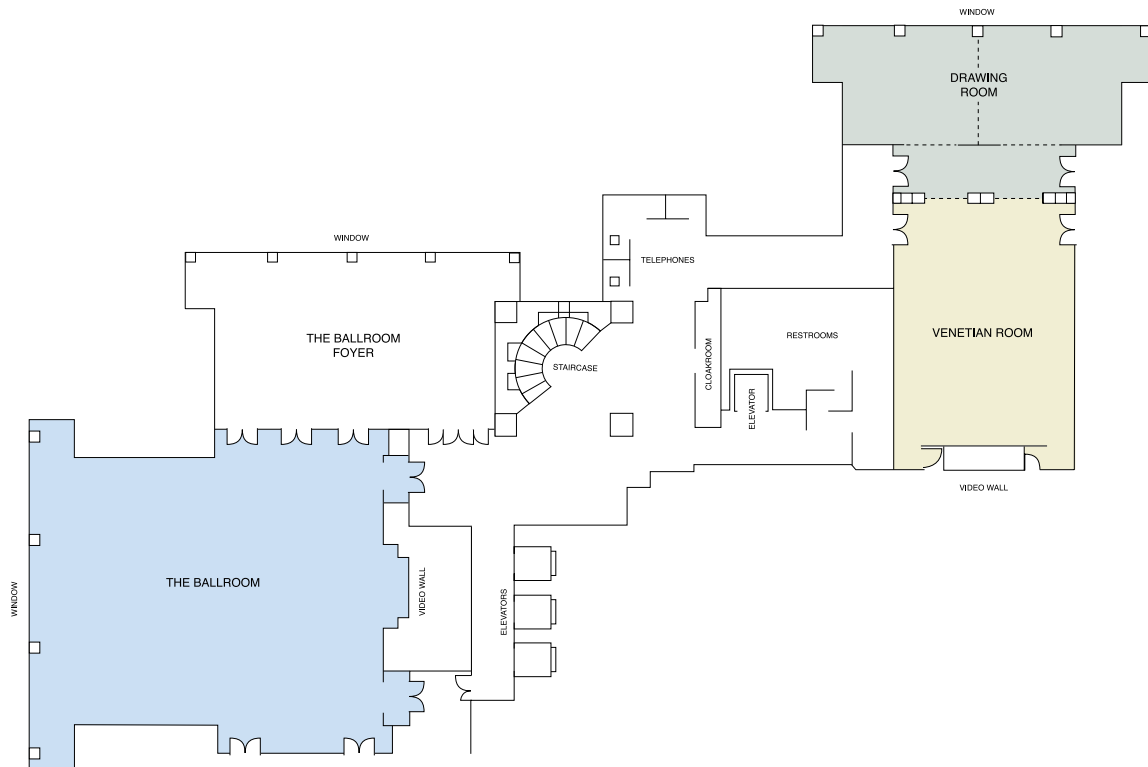




PARK HYATT TOKYO

3-7-1-2 Nishi-Shinjuku
 Shinjuku-Ku, Tokyo, 163-1055
 Japan
 TELEPHONE +81 3 5322 1234
 FACSIMILE +81 3 5322 1288
 EMAIL tokyo.park@hyatt.com
tokyo.park.hyatt.com



LEVEL 39

CONFERENCES & BANQUETS

- 893 square metres (9,614 square foot) of beautifully appointed meeting and function facilities offering breathtaking views of the Tokyo skyline
- The Ballroom with high ceilings (6.5 metres), state-of-the-art audio-visual system, conference-quality sound, and a built-in video wall. A performance balcony for musicians and remarkable views of sky and cityscape
- Venetian Room with Venetian crystal chandeliers and hardwood flooring
- Drawing Room, an elegant personal residence, complete with exquisitely appointed dining and lounge areas
- State-of-the-art information technology support facilities
- Business Centre: Open 24 hours, offering a full range of office equipment and secretarial services in addition to workstations equipped with computers and a conference room, seating four people, available to guests for free of charge for two hours. There are also two private boardrooms